
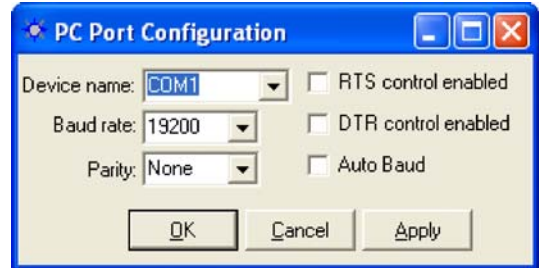


This guide will step you through loading navigation software to the GPS receiver via NavCom's StarUtil GUI program.

Problem - GPS Receiver's Navigation software is corrupt

- ✓ Turn OFF the GPS Receiver
- ✓ At the PC, connect the RS-232 port to the receiver LEMO cable to COM2.

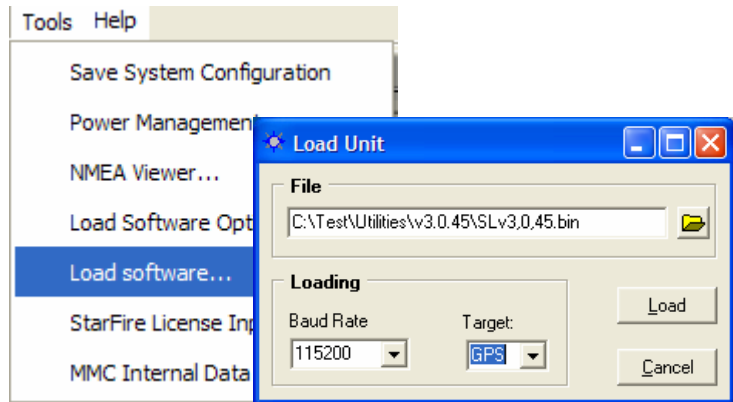
- ✓ Run StarUtil, click on  icon to open up the PC Port Configuration dialog.




07-00017-A

- ✓ Select
 - Device name: PC COM port
 - Baud rate: 19200
 - Parity: None
 - uncheck Auto Baud
 - click OK.

- ✓ Tools →
- ✓ Load Software...→
- ✓ Load Unit - Select the 'SLv#,#,##.bin' file (click to browse file if necessary), where # is software version number
- ✓ Set the Baud Rate to 115200
- ✓ Set Target: GPS.
- ✓ Click Load to initiate software upload.



- ✓ Turn ON the GPS receiver and Navigation (GPS) software will upload.

 If software upload does not initiate after 1 minute, re-try this procedure 3 times. If necessary, upload at 19200 Baud Rate. If the software does not upload and StarUtil is unable to communicate with the receiver, your unit may have a faulty COM Port. Please contact NavCom's Customer Support for an RMA.

- ✓ When the software load is complete, wait 5 seconds, then cycle power to the GPS receiver.