

This guide provides guidance when the user has a valid StarFire™ license, but the NavCom dual-frequency receiver will not track a StarFire™ satellite. It provides steps to use the NavCom program, StarUtil, to manually tune the dual-frequency receiver to the appropriate licensed StarFire™ satellite.

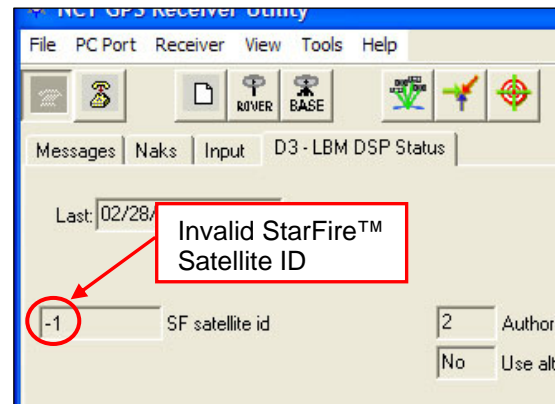
## Valid StarFire™ Satellites

The table below identifies all of the StarFire™ satellites by Network. The satellite ID's in the table are the only valid StarFire™ satellite ID's.

*StarFire™ Satellites*

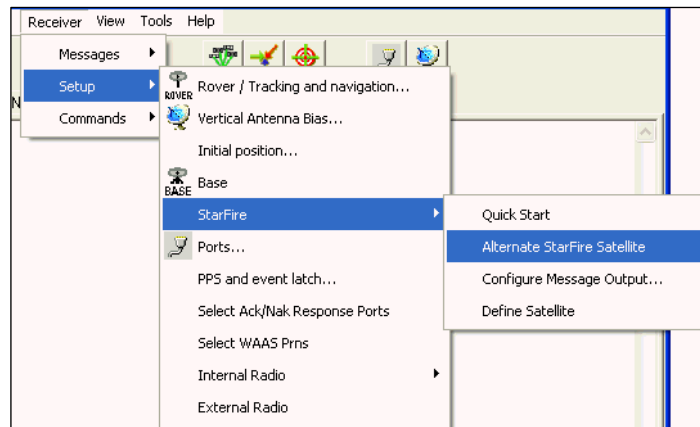
Network	Satellite ID	Longitude	Satellite Name	Uplink Site
Net 1	402	98W	PAC-E	Laurentides
	609	109E	IND-E	Perth
	525	25E	IND-W	Burum
Net 2	358	142W	PAC-C	Santa Paula
	643.5	143.5E	PAC-W	Auckland
	484.5	15.5W	AOR-E	Southbury

- ✓ Run StarUtil to determine if the receiver is tuned to a valid StarFire™ satellite.
- ✓ Select *View > D3 – LBM DSP Status*. The *D3-LBM DSP Status* tab opens.
- ✓ Click the *Retrieve* button. The *SF satellite id* field displays the ID of the currently tracked StarFire™ satellite. In the example to the right, the StarFire™ satellite ID is not valid. The receiver is not tracking a StarFire™ satellite.
- ✓ Go to the next section if the *SF satellite id* field does not display a valid StarFire™ satellite ID. Do not exit StarUtil.

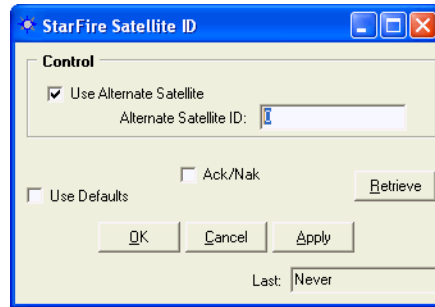


## Manual StarFire™ Satellite Setup

- ✓ Select *Receiver > Setup > StarFire™ > Alternate StarFire™ Satellite*. The *StarFire™ Satellite ID* window opens (see next page).

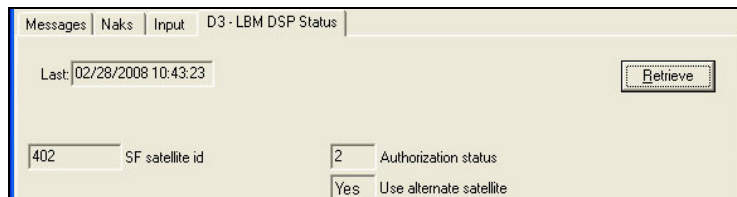


*Alternate StarFire™ Satellite Menu Selection*



StarFire™ Satellite ID window

- ✓ Click the check box to the left of *Use Alternate Satellite*.
- ✓ Type in a valid satellite ID in the *Alternate Satellite ID* field:
  - An available licensed StarFire™ satellite. (the table on the previous page identifies StarFire™ Satellites by Network.)
  - Or
  - The user-defined StarFire™ satellite (if defined).
- ✓ Click the check box for *Ack/Nak* to enable this response if desired.
- ✓ Click the *Apply* button and then the *Retrieve* button:
  - If the satellite ID is accepted, it remains in the *Alternate Satellite ID* field, and the check box remains checked.
  - If the satellite ID is not accepted, the *Alternate Satellite ID* field displays “0”, and the check box is blank.
- ✓ Confirm the manual selection of the alternate satellite on either of these tabs:
  - Select *View > D3 – LBM DSP Status*. The D3-LBM DSP Status tab opens. Click the *Retrieve* button. The tab must display *Yes* in the *Use alternate satellite* field, and a valid StarFire™ satellite ID in the *SF satellite id* field. In the example below, *402* is a valid ID.



- Select *View > DB – StarFire™ Satellites*. The *DB-StarFire™ Satellites* tab opens (see below). Click *Retrieve* button. The *Mode* for the alternate StarFire™ satellite is *Manual*.

