

This guide provides guidance to install the StarFire™ License with the NavCom program, StarUtil. There are three versions of StarUtil:

- ✓ StarUtil (v100.4.16 or earlier): This version of StarUtil will run on both NCT-2100D and NCT-2000D family of products operating on software version 3.1.17 or earlier.
- ✓ StarUtil-2100 (NCT-2100D family of products; v101.5.x and later): This operates on software version 4.2 or later.
- ✓ StarUtil-2000 (NCT-2000D family of products; v100.5.x and later): This operates on software version 3.2 or later.



StarUtil is provided on a CD-ROM (P/N 96-310006-3001) included with the GPS receiver. It runs on PCs only. No special drivers are required.



All versions of StarUtil share most of the same features, but are not interchangeable. StarUtil will not function properly if the incorrect version is installed. Refer to the Release Notes to insure that your StarUtil version matches the loaded firmware version in your GPS receiver. Current and archived Release Notes are available on the NavCom web site:

<http://www.navcomtech.com/Support/DownloadCenter.cfm?category=releasenotes>.

Determine StarUtil Version & Run StarUtil

The GPS unit serial number or the GPS digital card serial number is used to determine the StarUtil version to install.

- ✓ Refer to Figure 1 to locate:
 - The GPS unit serial number on the rear of the receiver
 - Or
 - The digital card serial number if an old version of StarUtil is installed on the computer. Open StarUtil and select *View > AE - Version Information*. A tab opens that includes the digital card serial number.

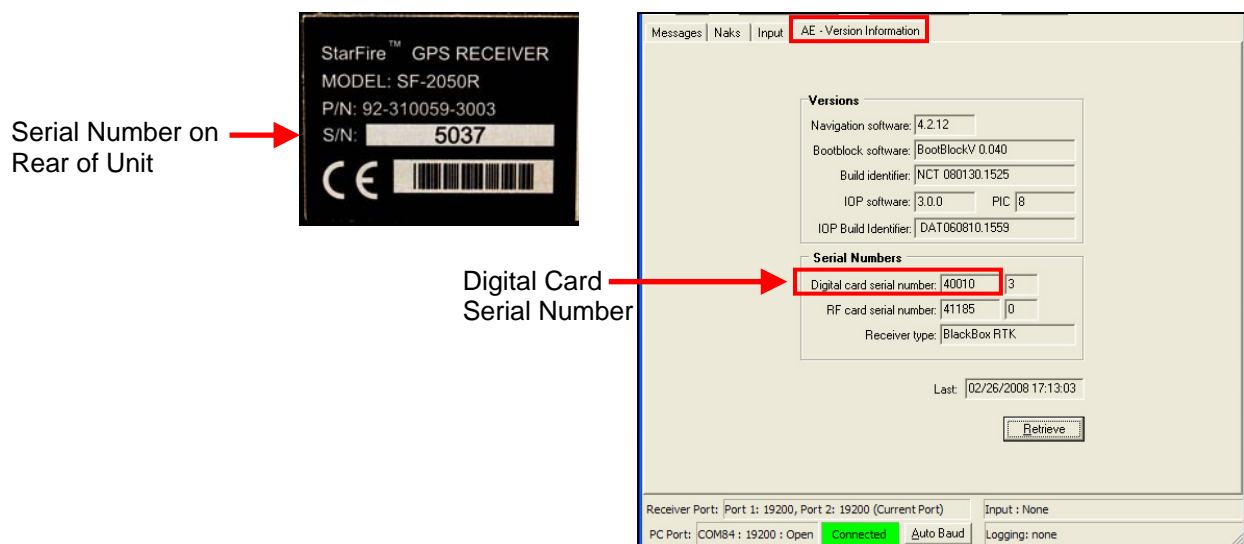


Figure 1: Unit & Digital Card Serial Numbers

- ✓ Refer to Table 1 to determine the correct StarUtil executable file for the GPS unit.

Table 1: Serial Numbers To Determine StarUtil Version

StarUtil Version	Digital Card Serial Number	Unit Serial Number
StarUtil-2000.exe	< 40,000	< 5000
StarUtil-2100.exe	> 40,000	> 5000



For GPS software version 3.1.17 or earlier Table 1 does not apply.

- ✓ Locate the StarUtil executable file, and double-click it to run StarUtil.

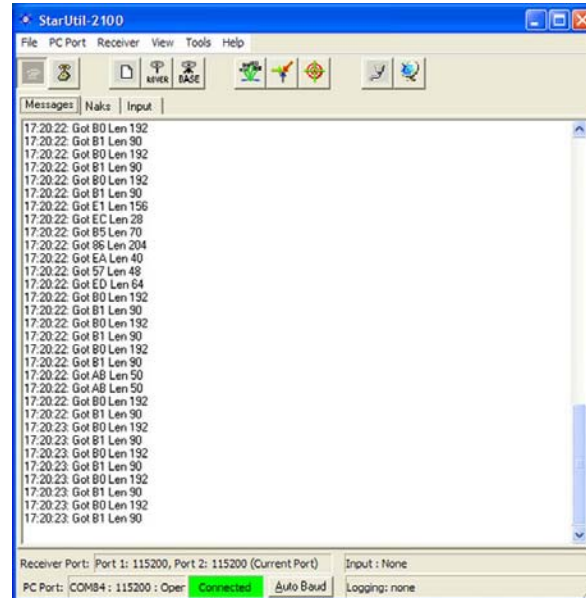


Figure 2: Main StarUtil Window

Load StarFire™ License



The receiver must be navigating at the time of the StarFire™ license upload to accept the license.

- ✓ Save the StarFire™ license file received via email to the hard drive.
- ✓ Select *Tools > StarFire™ License Input* to upload the StarFire™ license. The *LBM License* window opens (see Figure 3).

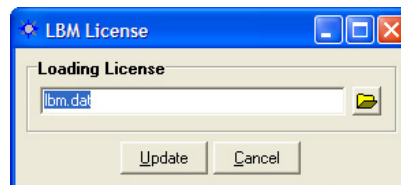



Figure 3: StarFire™ License Upload Window

- ✓ Click the button to browse to and select the StarFire™ license file. The path to the file appears in the *LBM License* window.
- ✓ Click the *Update* button. A window opens to indicate a successful upload.

- ✓ Click the  icon on the toolbar to confirm that the rover is configured for StarFire™. The *Rover / Navigation & Tracking Setup* window opens. The navigation mode, *RTG input*, must be set to *Use* (the default) to enable StarFire™ navigation (see Figure 4).

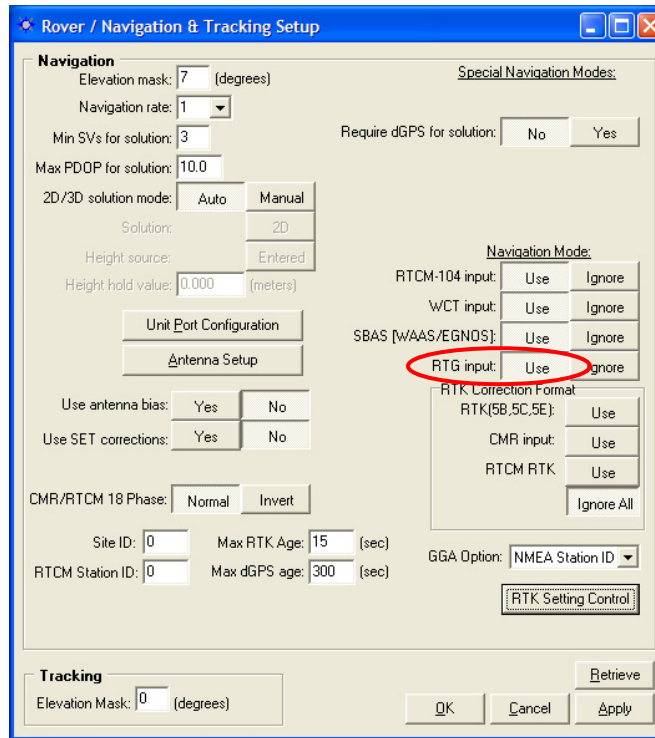


Figure 4: Rover Configured for StarFire™ Navigation



To verify an active StarFire™ license, select *View > D1 – LBM License Status*. Click the *Retrieve* button on the *D1* tab. If no license is displayed on the tab, the receiver will not decode the StarFire™ signal. If no license is displayed, select *View > D5 – LBM License Cancel History* to display cancelled licenses.

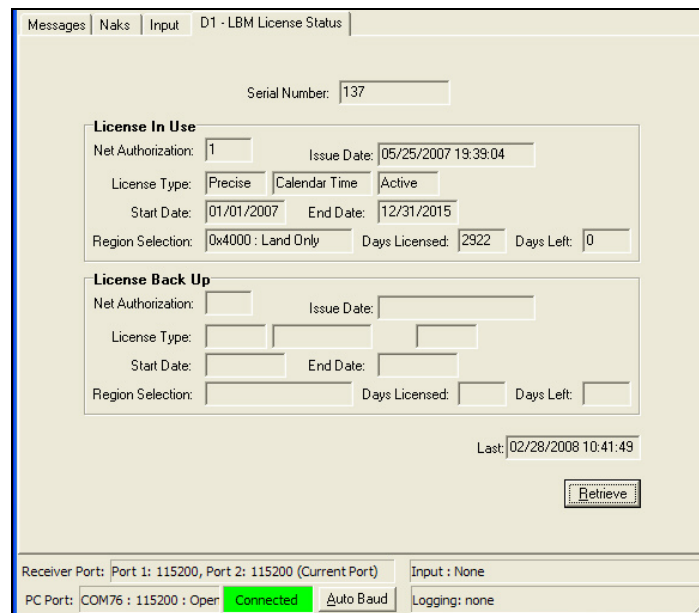


Figure 5: D1 – LBM License Status