
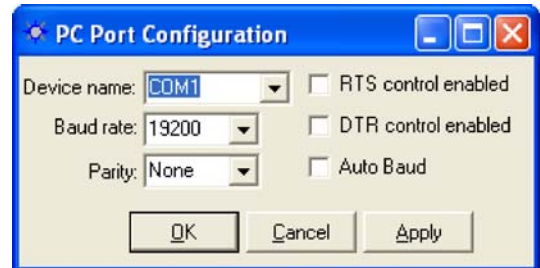


This guide will step you through loading IOP software to the GPS receiver via NavCom’s StarUtil GUI program.

Problem - GPS Receiver’s IOP software is corrupt

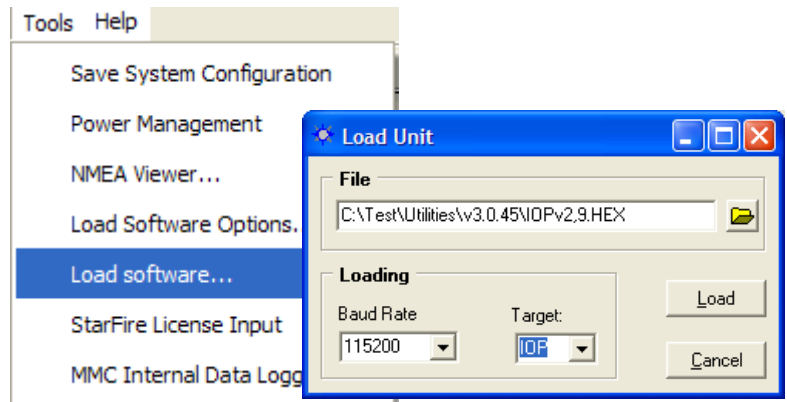
- ✓ Turn OFF the GPS Receiver
- ✓ At the PC, connect the RS-232 port to the receiver LEMO cable to COM1.

- ✓ Run StarUtil, click on  icon to open up the PC Port Configuration dialog.
- ✓ Select
 - Device name: PC COM port
 - Baud rate: 19200
 - Parity: None
 - uncheck *Auto Baud*
 - click OK.



07-00017-A

- ✓ *Tools* →
- ✓ *Load Software...* →
- ✓ Load Unit - Select the 'IOPv#,#.HEX' file (click to browse file if necessary), where # is software version number
- ✓ Set the Baud Rate to 19200
- ✓ Set Target: *IOP*.
- ✓ Click Load to initiate software upload.
- ✓ Turn ON the GPS receiver and IOP software will upload.



 If software upload does not initiate after 1 minute, re-try this procedure 3 times.

Make sure to start the load within 3 seconds of turning the receiver on. The boot program looks at the com port during the first 3 seconds at 19200 before executing the primary program. This provides a single opportunity to regain control of the receiver and load the software. After the 3 second interval, the receiver state or port baud rate is unknown, particularly if it was set to some other value.

If the software does not upload and StarUtil is unable to communicate with the receiver, the unit may have a faulty COM Port. Please contact NavCom’s Customer Support for an RMA.

- ✓ When the software load is complete, wait 5 seconds, then cycle power to the GPS receiver.