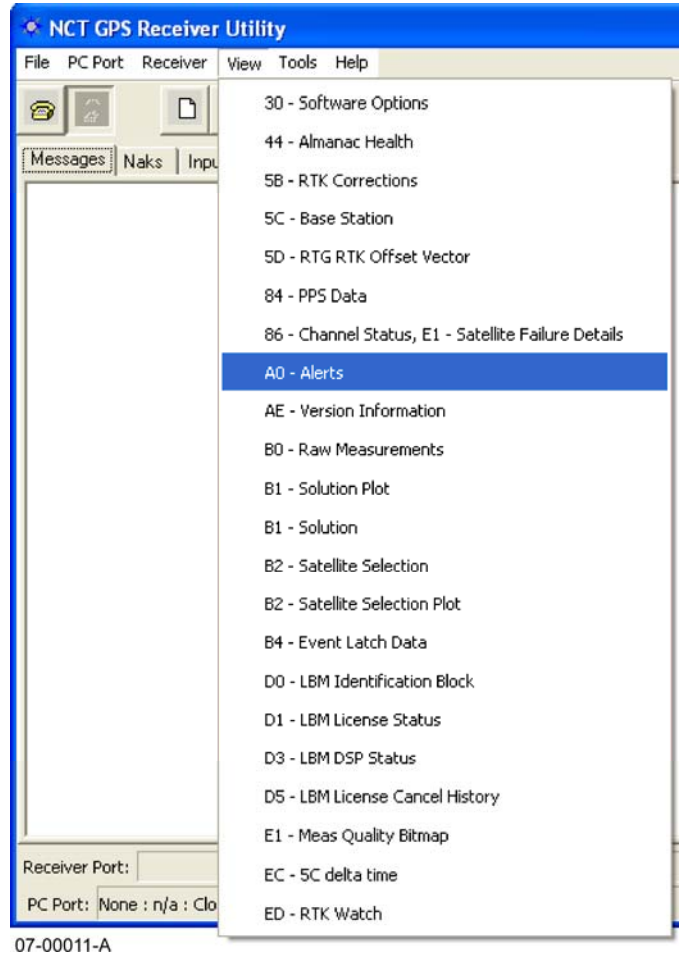


This guide will step you through resetting the GPS receiver to the Factory Default configuration via NavCom's StarUtil GUI program.

- ☐ Please do not use this without any approval from NavCom's Customer Support. Using this multiple times can corrupt NVRAM.

Perform the following steps to establish communication:

- ✓ Make sure that the GPS receiver is navigating and tracking satellites.
- ✓ Establish communication to GPS receiver's Control Port.
- ✓ View →
- ✓ A0 - Alert.
- ✓ Receiver →
- ✓ Commands →
- ✓ Key... for Key Command window.

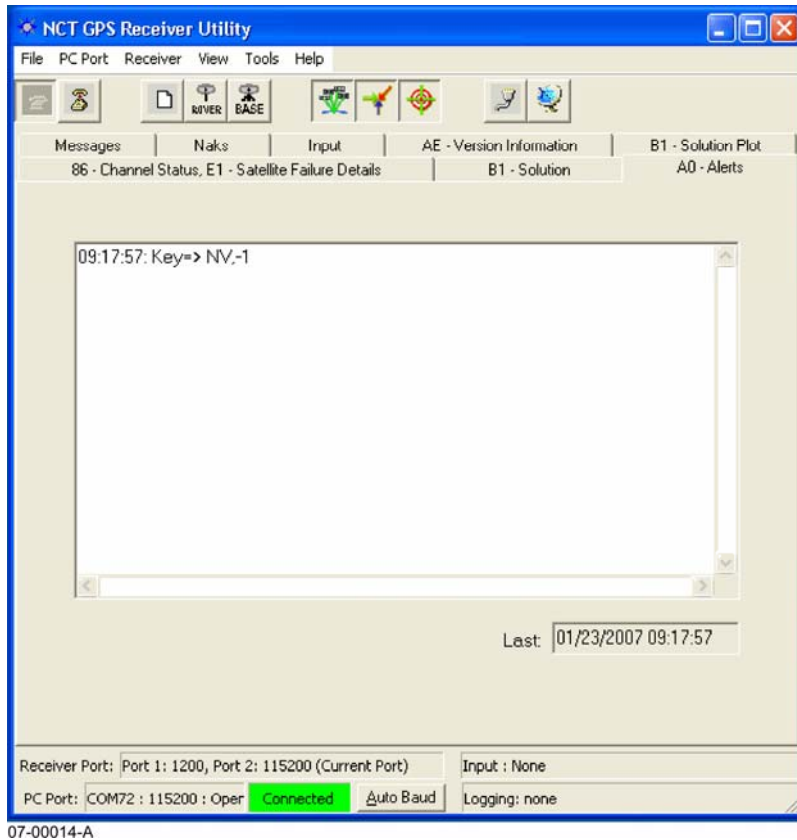


- ✓ Type in *NV,-1* and click OK.



07-00013-A

- ✓ Key => NV,-1 comes up in A0 – Alerts tab for receiver confirmation.



- ✓ GPS Receiver’s LEDs blink.
- ✓ After 10 seconds, cycle power (Turn OFF and then ON) the GPS receiver.
- ☐ Although the receiver has already been software cycled, it is always better to do a power cycle to ensure the receiver goes through the complete boot-up process.
- ✓ Establish communication through COM2, which is default Control Port (the default baud rate has been reset to 19.2K).
- ✓ The almanac and ephemeris are reset. Let the GPS receiver track satellites and navigate for more than 30 minutes to download a new almanac. Although it only takes 12.5 minutes to gather the almanac, if the satellite providing the data is setting, the almanac will be incomplete. This is why a 30 minute period is recommended.