

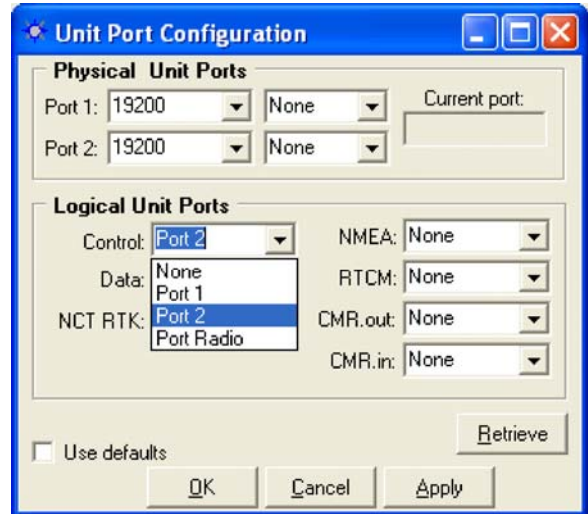
This guide will step you through establish communication with COM2 of the GPS receiver via NavCom's StarUtil GUI program.

- ☐ Most 3rd Party Software in Handheld controllers, configures Port A (COM1) as Control Port.

**Problem - Unit Port Configuration**

Control Port has been moved to Port A (COM1) or has not been assigned.

- ✓ Connect the controller to the receiver's COM1 port (default baud rate of 19.2K).
- ✓ Establish communication through the appropriate baud rate and reconfigure Unit Port Configuration to have Control Port as Port B (COM2).

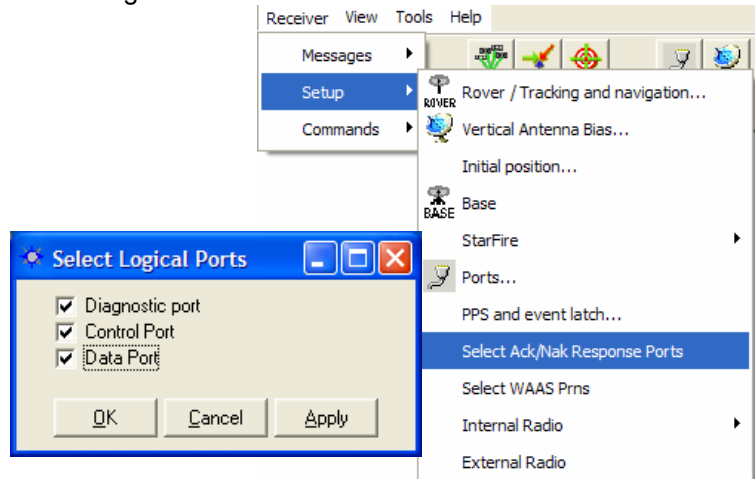


0700015--A

**Problem - StarUtil is still unable to establish communication with COM1 or COM2**

Neither Port A (COM1) or Port B (COM2) has been configured as Control Port.

- ✓ Click Receiver →
- ✓ Click Setup →
- ✓ Select Ack/Nak Response Ports →
- ✓ Select Logical Ports
- ✓ Check (✓) Diagnostic, Control and Data Port.
- ✓ Click OK and re-establish communication.
- ✓ Reconfigure Unit Port Configuration as desired.



**Problem - StarUtil is still unable to establish communication with COM1 or COM2**

- ✓ Your GPS receiver may have corrupt software. Follow the instructions in *Troubleshooting - Navigation Software Upload* (using StarUtil).

**Problem - StarUtil is able to establish communication, but unable to Retrieve any information or configure the GPS receiver.**

- ✓ StarUtil is unable to Retrieve or configure a GPS receiver unless communication is established through the Control Port or have the Select Logical Ports enabled.