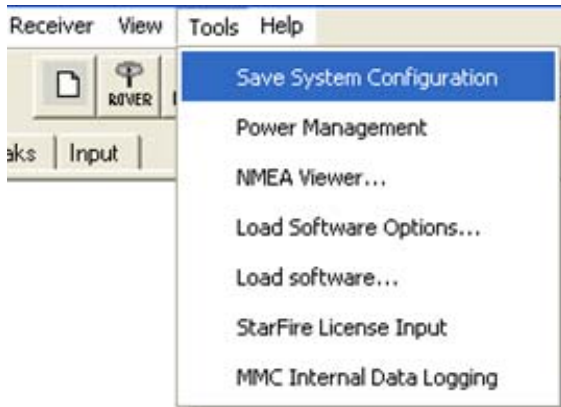


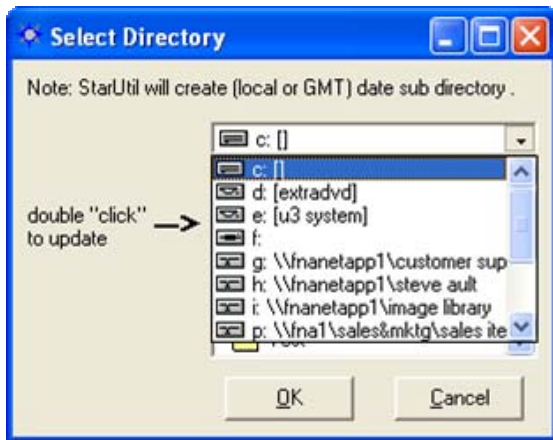
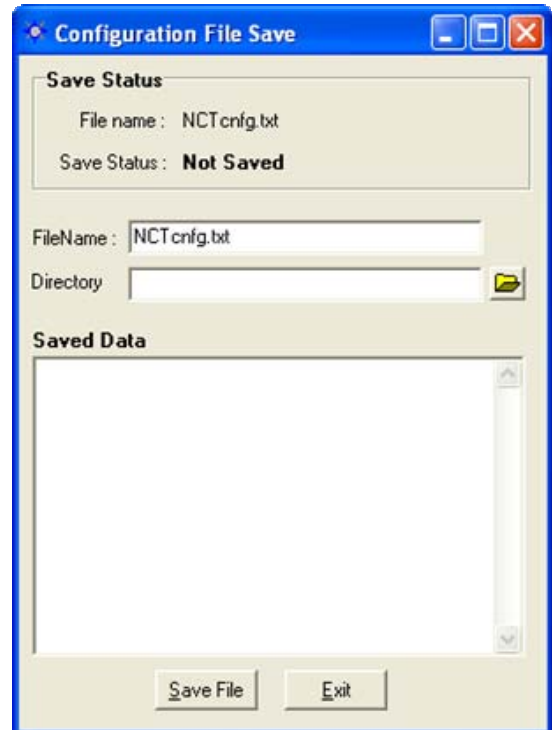
This guide will step you through collecting NCT receiver configuration data from the GPS receiver via NavCom's StarUtil GUI program. This procedure is often used to collect data for NavCom to evaluate customer reported difficulties.

Setup – See the Troubleshooting Guide – Communication if StarUtil is not communicating with the receiver.

- ✓ Click Tools →
- ✓ Save System Configuration ....to bring up the Configuration File Save window.



- ✓ Enter an appropriate file name, with a txt extension.
- ✓ Select a directory to write the data to.



- ✓ Click the Save File button on the bottom of the screen.



The details of the configuration file will be displayed on the screen and written to the designated text file. The text file can be viewed for future reference and transferred to NavCom to aid in troubleshooting.

```

SYSTEM INFORMATION BLOCK
StarUtil Version: StarUtil 100.4.14
System Type: BlackBox GIS
Asic Type: C - ASIC (C/A, P1, P2, L1, L2, WAAS)
Starlite Version Number: 3.1.11
Software Time Mark: NCT 070117.1726
Boot String: BootBlockV1.7
IOP Version Number: 3.0.0
IOP Time Mark: DAT060810.1559
PIC Version Number: 8
LBM Version: 1.5
LBM Boot Version:
LBM Build String: xxx      061215.1143
LBM Serial Number: 118
LBM Hardware Configuration: 3002
LBM Communication ID: 5
Digital Card Serial Number: 15155
Digital Card Class: 3
RF Card Serial Number: 15444
    
```